

FORMING PARTNERSHIPS FOR CREATIVE SOLUTIONS



**OUR VISION IS TO CREATE THE BEST VALUE BY BRINGING YOU
THE MOST INNOVATIVE SOLUTIONS POSSIBLE USING PLASTIC
SHEETS – WHILE RESPECTING THE ENVIRONMENT.**



**OPAQUE
PRODUCTS**



**TRANSPARENT
PRODUCTS**



**MULTIWALL
PRODUCTS**



WELCOME TO ARLA PLAST

Here at Arla Plast we are extremely proud of our history – we recognise the importance of traditions and make a point of continuing them. We also endeavour to meet the toughest demands that customers can make of us. Add into the equation the flexibility and service-mindedness that characterise a really customer-focused business, couple this with our close, long-term relationships with our customers and suppliers, and you will get a good idea of what we are all about.

The fact that Arla Plast is family-owned has made its mark on our business. People are important to us. By choosing good employees, working together and ensuring involvement in the decision-making process, we aim to provide you, the customer, with everything that you have a right to expect from a supplier.

Our company produces and delivers products that fulfil the demand and expectations from our customers in relation to flexibility, function, technical quality, delivery time, good service and price. Our company shall aim for a good internal working environment but also aim to minimise effects on the global environment.

Arla Plast is now one of Europe's leading suppliers of extruded sheet. But this certainly gives us no reason to rest on our laurels. We are continuously working on new products, new delivery requirements, and new ways of ensuring a better environment; all this to become and remain your best working partner.

A handwritten signature in black ink, which appears to read "Ulf Symvold". The signature is written in a cursive, flowing style.

OUR CORE VALUES

High product quality is an essential attribute of a good supplier, but our aims are a great deal higher. We have found out from many years of co-operation with our customers that flexibility, reliability of supply and excellent service are vital elements for creating confidence and building up solid long-term relationships. We summarise this as our core values; Quality, Flexibility, Service and Speed.

QUALITY

We have a reputation for innovation and are constantly improving with the latest technology in the industry, never losing sight of the quality standards required to meet customer needs.

FLEXIBILITY

Being open to new ideas and ways of working, as well as always paying careful attention and striving to meet the needs of every individual client, we adapt to our customers needs.

SERVICE

With a strong belief in long-term partnership and communication, we are always eager to hear the views of our customers in order to adapt to the highest level of service.

SPEED

Our short set-up times, flexible systems and personnel attitude enables us to speed up the production and delivery process, fulfilling the needs at a greater pace and direction.



OUR STANDARD MATERIALS AND CUSTOMIZED PRODUCTS ARE AIMED AT MEETING YOUR SPECIFIC NEEDS

We are one of Europe's largest producers of thermoplastic extruded sheet material. We produce PC, PETG and ABS and also blends. Our advanced co-extrusion technology allows us to have up to five layers.

STANDARD PRODUCTS

Our standard range of products is dominated by transparent polycarbonate and PETG sheets. The sheets are also available in grey, bronze and opal white versions. The product line includes a wide range of very high-class products made from the best conceivable raw materials and with unique combinations of properties such as high impact strength, good formability, low weight and long useful life. For long-term outdoor service, we recommend our co-extruded sheets with UV-protected surface. We keep a stock of our standard range of products for immediate delivery.

CUSTOMIZED PRODUCTS

Customized products are almost exclusively coloured sheets in a wide range of materials, colours and surface patterns. Our flexible production system with short set-up times enables us to offer these products with fast service and short delivery times. The sheets are often aimed for vacuum forming. We work principally with coloured materials, such as polycarbonate, ABS and PETG. The surface pattern gives the material its specific character and wear resistance. You can choose between a range of standard patterns, or you can order a pattern to your particular specification.

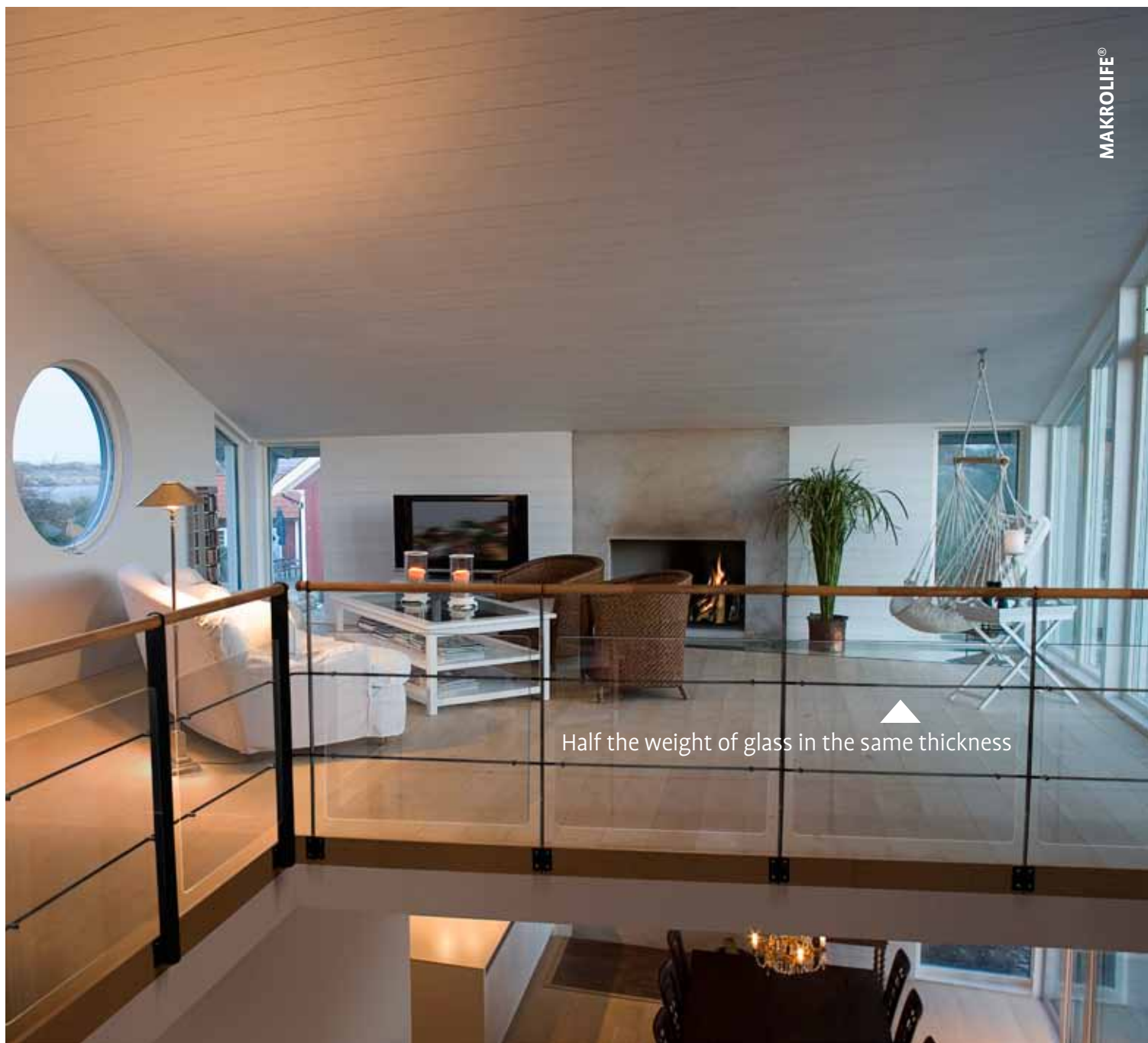
OUR CUSTOMERS DO OFTEN NEED MATERIALS with special properties for their particular applications. In specific customer projects, we jointly define requirements specifications, we select the most suitable raw materials, and we adapt the production process to suit the customers. Our materials laboratory has wide-ranging technical resources for verifying the properties and testing the performance of materials in practical applications or service. In all development work, we set very high quality standards. As an important element in our overall quality work in production, distribution and service, we are certificated to the ISO 9001 quality standard.



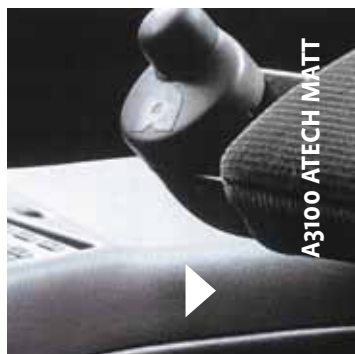
Standard products MAKROLIFE® we keep unit pallets on stock for immediate dispatch.



Customized products MAKROTECH®
Silver Unique metallic colours.



Half the weight of glass in the same thickness



A3100 ATECH MATT

Excellent matt finish



MAKROTECH® SILVER

Tailor-made solutions



COLORADO™ UV BRONZE

Excellent technical support



SAPHIR™ SPD

Screen-printed scratch resistant polycarbonate

High impact strength
and low weight

SAPHIR™



MAKROLIFE™, MULTICLEAR™

High light transmission, high clarity



PRODUCTS AND PRODUCT GROUPS

OPAQUE PRODUCTS

An extensive selection of opaque PC and ABS with high impact strength within a wide temperature range. The product is fit for purpose for various application as it thermoforms quickly and effectively.

OPAQUE PC SHEETS

- Makrotech®
- Makrotech® Matt
- Makrotech® UV
- Makrotech® FR
- Makrotech® FA
- RPC
- RPC UV
- RPC with stripes

OPAQUE ABS SHEETS

- ATECH™ 2000R Recycled
- ATECH™ 3000 ABS Standard
- ATECH™ 3100 ABS Matt
- ATECH™ 3200 ABS/PMMA
- ATECH™ 3300 ABS/ASA
- ATECH™ 3400 ABS/Matt PMMA
- ATECH™ 3700 ABS/Soft touch
- ATECH™ 5100 ABS/PC

OPAQUE TPE SHEETS

- O8000 TPE
- O8003 TPE UV stabilized

OPAQUE PETG SHEETS

- Griphtech™
- Griphtech™ UV

TRANSPARENT PRODUCTS

Makroclear®, Makrolife®, Colorado™, Saphir™, Griphen™ and Griphen™ Frost solid ranges provide solutions to improve on the standard qualities of transparent sheet. Whatever the requirements or needs, our transparent ranger has the capability to match.

TRANSPARENT PC SHEETS

- Makroclear®
- Makrolife®
- Colorado™
- Saphir™
- Makroclear® TEX
- Makroclear® ICE
- Makroclear® Anti-Reflex

TRANSPARENT PETG SHEETS

- Griphen™
- Griphen™ Frost
- Griphen™ UV
- Griphen™ Colour

MULTIWALL PRODUCTS

Multiclear™ is a range of high quality extruded multiwall polycarbonate sheets. The Multiclear™ production facility has the latest extrusion technology purpose built to focus on high quality production and flexible service dedicated to the multiwall programme.

MULTIWALL SHEETS

- Multiclear™ Box 2 Wall
- Multiclear™ Strong
- Multiclear™ Box 3 Wall
- Multiclear™ Light

Outdoor applications such as gardening applications, agriculture vehicles, transport vehicles, advertising, industrial machinery, interior parts in vehicles, luxury packaging, automotive and leisure/ sporting goods where the material can experience tough handling even at low temperatures.



PC is excellent for outdoor applications where glass is used today. Ice hockey rinks, signs, displays, bicycle helmets, bus shelters, vending machines, public telephones, stairs, food displays/bin/dividers, in interior design, displays, indoor illuminated signs, showcases applications and exclusive design accessories are some popular applications.

The unique "frosty" look has made the PETG Griphen™ Frost a favourite material to work with among designers and architects.



Conservatories, shopping centre roofing, railway/metro station roofing, skylights, sheds and car ports, stadia and atria, swimming pool covers, neon signs boxes, illuminated signs and advertising panels, pallet shields, protective covers for fragile items, greenhouses, lorry/tractor ports and farm/barn buildings.



OUR PRODUCTION OF EXTRUDED SHEET IS BASED ON APPROPRIATE TECHNOLOGY, IN-DEPTH EXPERTISE, A PIONEERING SPIRIT AND A STRONG COMMITMENT TO ENVIRONMENTAL RESPONSIBILITY

It's by no means easy to become a forerunner in any line of business. But staying ahead of the competition is a challenge to us. In cooperation with our machine manufacturers, we have acquired state-of-the-art production machinery, with co-extrusion as our speciality. All machines can handle a minimum of three layers of material, and a majority of them handle up to five layers. This offers you exceptional opportunities to decide on the material combinations that produces the best mechanical and chemical properties, surface finish, colour and environmental performance needed.

Recycling is another one of our pioneering fields of expertise. As far back as 30 years ago, we began the work of recycling sheet materials from our customers. Together with co-extrusion technology, this offers particularly cost-effective solutions, such as producing a core of recycled material sandwiched between surface layers of new material. Our own experimental efforts are actively focused on finding processing methods and new fields of application for recycled materials.

Our operations are geared to invest in improving technology to minimise the impact on the environment. At Arla Plast we aim to contribute to a more sustainable future.

Secure door-to-door deliveries

Most of the sheet we produce is exported to all corners of Europe. An efficient distribution network of hand-picked hauliers in every country enables us to meet your demands for speed, reliability of supply and transport economy.

Technical support

Our expertise is at your fingertips. Whatever your query, we will do our utmost to provide a solution in the minimum possible time to the customer. No matter how busy we are, we are never too busy for you.

- Dedicated technical and regulatory support team in place
- Helpful support in our laboratories
- Telephone technical service for urgent queries
- Quick response to your problem

OUR PRODUCTION PLANTS



Headquarter and production plant in Sweden

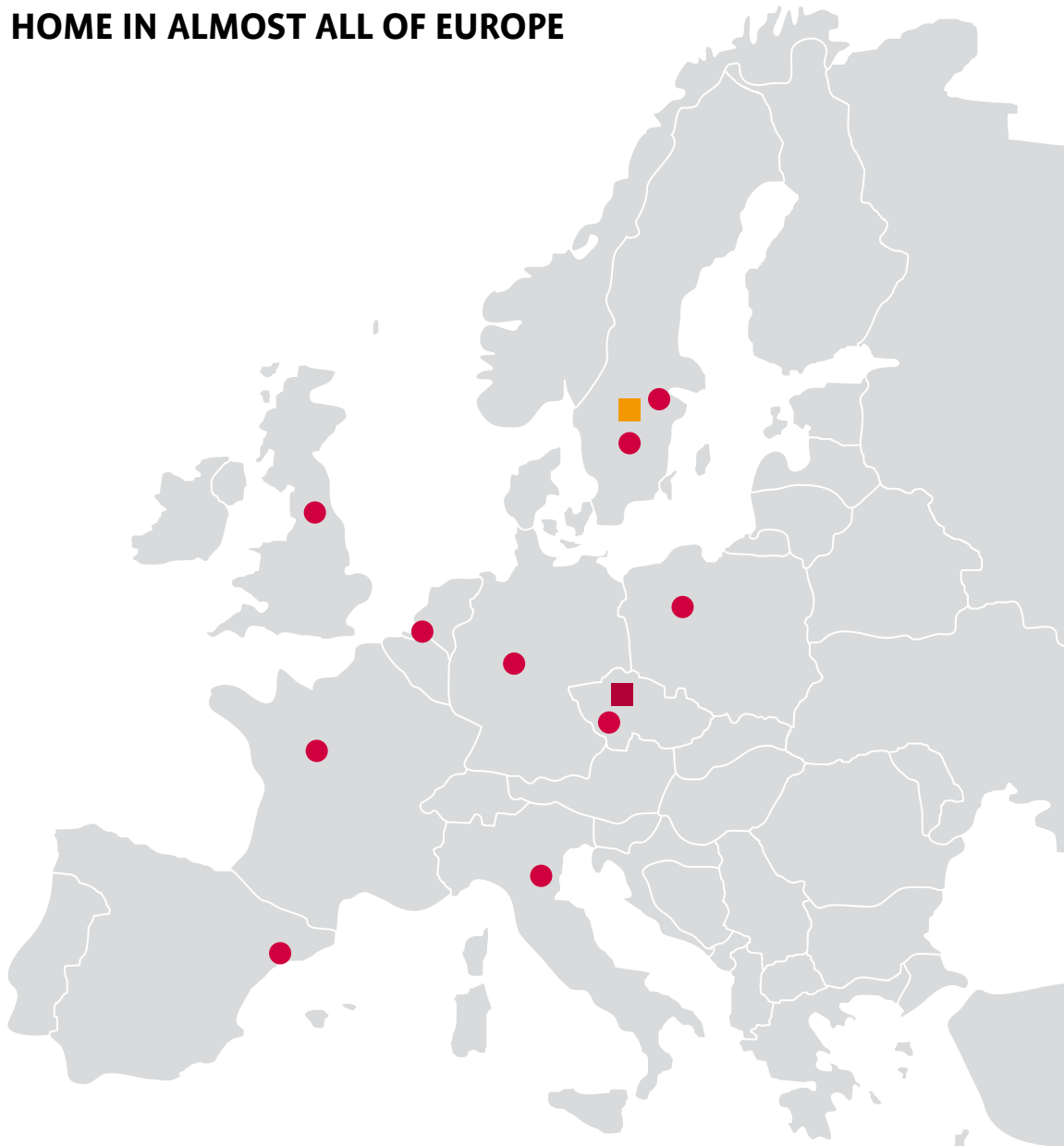
Arla Plast AB is located in Borensberg, 250 km south west of Stockholm in Sweden. Producing and manufacturing solid plastic sheets since 1974.



Production plant in Czech Republic

Arla Plast s.r.o., is placed in Kadan, north west of Prague in the Czech Republic. Producing and manufacturing multiwall polycarbonate sheets since 2006.

HOME IN ALMOST ALL OF EUROPE



■ Headquarter and production plant

Arla Plast AB
P.O.Box 33, Västanåvägen
SE-590 30 Borensberg Sweden
Tel: +46 141 20 38 00
Fax: +46 141 414 30
info@arlaplast.se

■ Production plant

Arla Plast s.r.o.
Kralovsky Vrch 1982
CZ-43201 Kadan
Czech Republic
Tel: +420 474 69 80 30
Fax: +420 474 69 80 40
infocz@arlaplast.com

● Sales offices



Photo: Ulla-Britt Larsson

IN 1969 ARNE LARSSON set up a family business known as Arla Plastprodukter AB with five years experience within the plastics industry. As a founder and a visionary he understood the trend and fashion of using plastics at the time which we now take for granted. The opportunities inspired by Arne were to play a major part in our company's history.

Our first products were supplied to the Swedish automotive industry in the form of fibreglass fenders as plastics had become the arch enemy of rust. A few years later the fibreglass were replaced using thermoformable ABS, and in 1974 we began extruding the ABS sheet ourselves. We stopped the production of fenders and also thermoforming long time ago. We are now a specialist sheet extrusion company and proud of our history with knowledge in thermoforming technology which is an important industry we serve today.

In 1993 Arne's son, Kenneth Synnersten, took over the company and set new goals for the future. Arla Plast grew rapidly internationally and opened ten sales offices serving customers all over Europe. The company expanded with 25 % a year throughout the 90's.

In 2006 a subsidiary Arla Plast s.r.o. was founded in Czech Republic, adding multiwall products to our growing portfolio.

The family involvement in the business continues with the third generation and the aim is to further strengthen our core values, always using the best available resources with respect to our environment too.